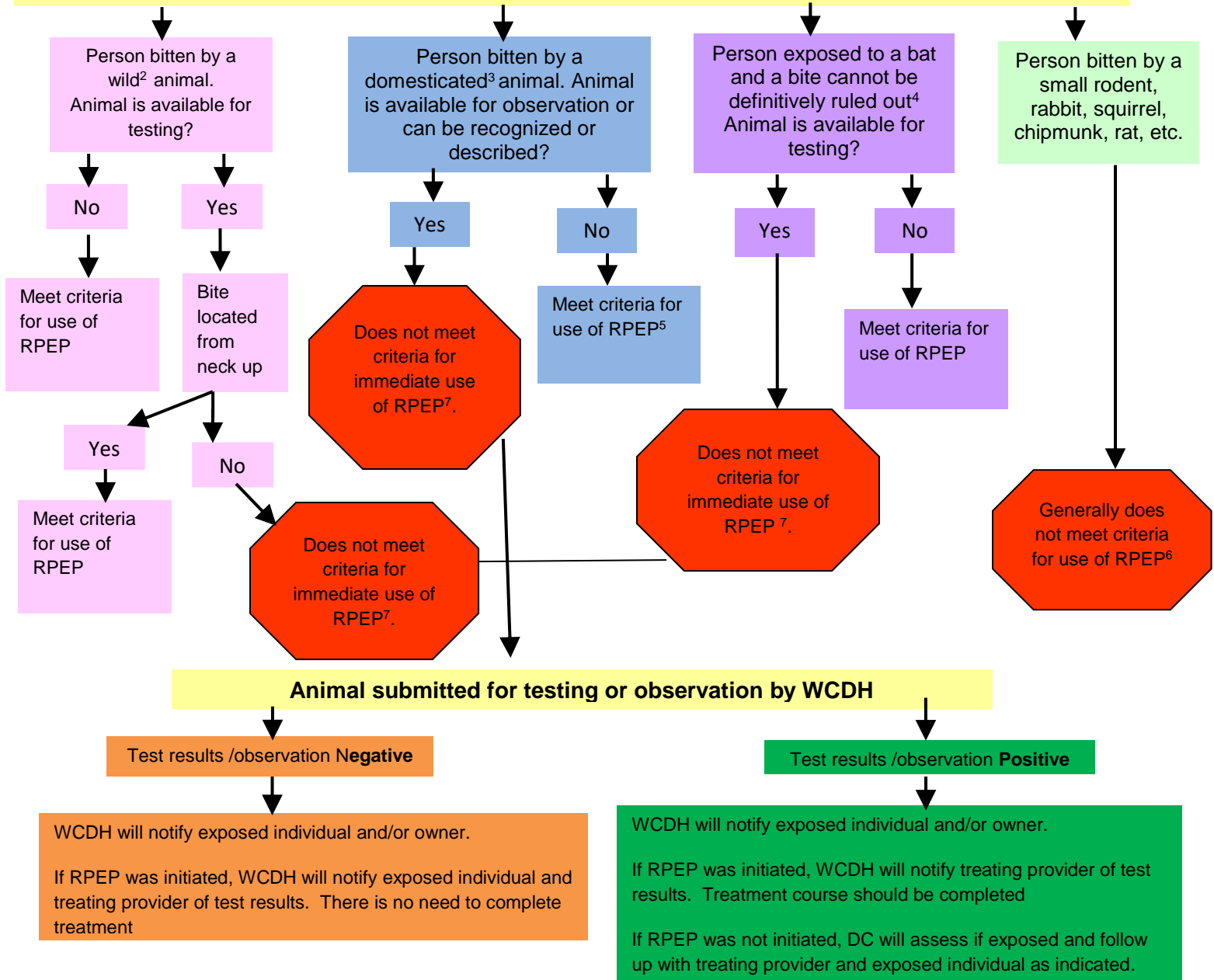


Rabies Post Exposure Prophylaxis (RPEP)¹ Algorithm (Modified)

Complete and fax the 1) [Hospital-Healthcare Provider RPEP Report Form](#) AND 2) [RPEP Administration Record](#) posted at <https://health.westchestergov.com/contact/after-hours> to (914) 813-5182 if RPEP is started.

The algorithm MUST be used in conjunction with the NYSDOH RPEP guidance document also posted at this website to determine if criteria for the use of RPEP are met.



Footnotes

1. Refer to hospital pharmacist, package insert, or CDC website for dosing instructions.
2. Wild animals with the highest rabies incidence include raccoons, bats, skunks and foxes.
3. Domesticated animals: dogs, cats, ferrets, horses, donkeys, mules, cattle, sheep, goats and pigs.
4. This includes situations where a bat is found **in the same room** as a sleeping person, unattended child, intoxicated or mentally compromised person.
5. General recommendation is to locate the animal for observation on the 10th day. If the exposed individual indicates that they would not be able to recognize the animal, RPEP can be used.
6. For unusual circumstances, contact the WCDH.
7. Immediate use of RPEP is not indicated. The decision to use RPEP is deferred pending the outcome of observation/testing.