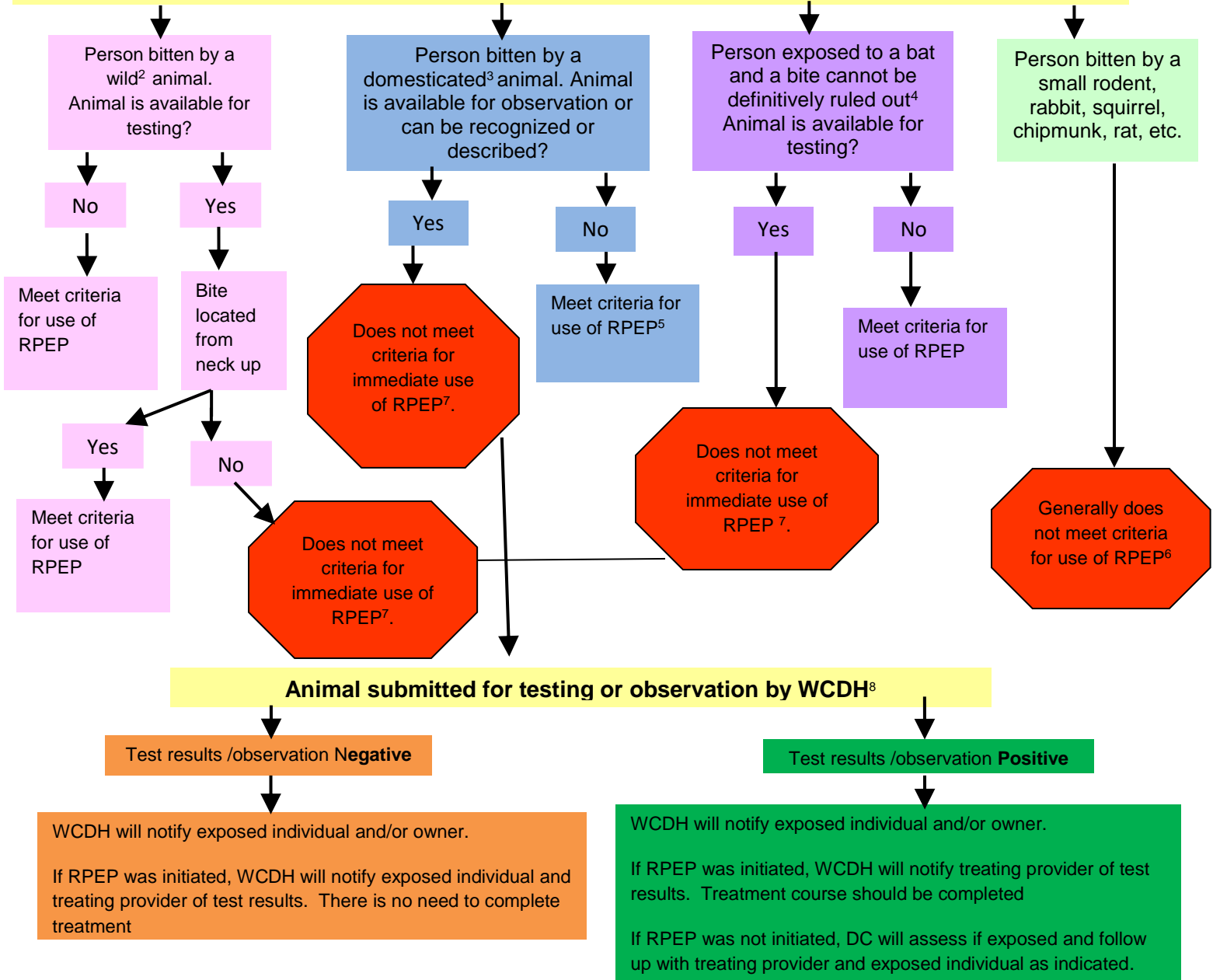


Rabies Post Exposure Prophylaxis (RPEP)¹ Algorithm (Modified)

Complete and fax the Human Rabies Case Investigation and PEP Record to: (914) 813-5182

The algorithm MUST be used in conjunction with the RPEP guidance document.

Use the algorithm to determine if criteria for the use of RPEP are met.



Footnotes

1. Refer to hospital pharmacist, package insert, or CDC website for dosing instructions.
2. Wild animals with the highest rabies incidence include raccoons, bats, skunks and foxes.
3. Domesticated animals: dogs, cats, ferrets, horses, donkeys, mules, cattle, sheep, goats and pigs.
4. This includes situations where a bat is found **in the same room** as a sleeping person, unattended child, intoxicated or mentally compromised person.
5. General recommendation is to locate the animal for observation on the 10th day. If the exposed individual indicates that they would not be able to recognize the animal, RPEP can be used.
6. For unusual circumstances, contact the WCDH.
7. Immediate use of RPEP is not indicated. The decision to use RPEP is deferred pending the outcome of observation/testing.
8. See Rabies PEP Guidance for Medical Providers

*See NYSDOH Rabies PEP Guidance and this algorithm posted on the WCDH website under After Hours for additional information.